



PEGASUS®

W600PC Series

Oil Barrier type, Cylinder bed, interlock stitch machines

↳ Equipped with
OIL-Barrier

Step up to "Plus"



**"Oil Barrier" type, W600PC Series debut!
that an Ultimate model of the standard machines.**



Common specifications

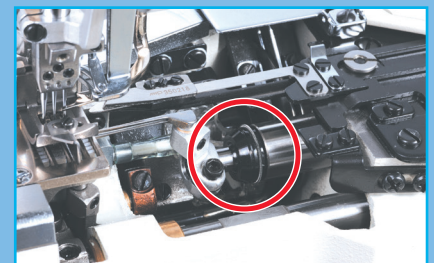
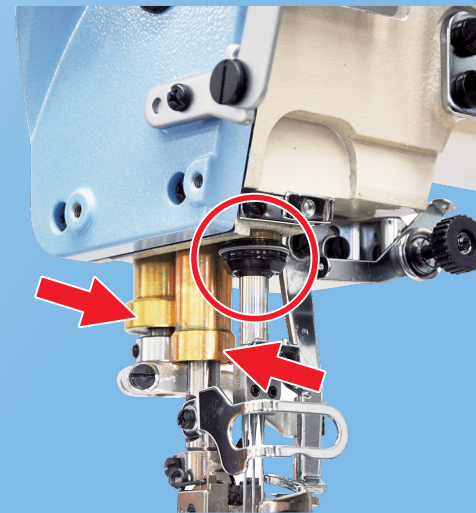
- No. of needles : 2 - 3 needles
- No. of threads : 3 - 5 threads
- Needle space : 2-needles (3.2 mm/4.0 mm/4.8 mm) *
3-needles (5.6 mm/6.4 mm)
- Main feed movement : 1.0 - 4.4 mm (Push button)
- Diff feed movement : 0.8 - 6.0 mm
- Presser foot lift : Max. 6.2 mm
- Max machine speed : 5,500 sti/min

* 5.6 mm and 6.4 mm gauges are achieved by removing the middle from the machines with gauges 3-needle machines.

* Detail of common specifications may change depending on subclasses and sewing conditions.

Adopting a state-of-the-art "Oil Barrier" technology!

- The needle bar and looper shaft include a newly designed oil seal and bushing, exerting dramatic "Oil Barrier" effectiveness, preventing oil leakage and oil splashes. And maintenance is very simple and easy, such as change the oil seal.
- This "Oil Barrier" feature completely blocks even one drop of oil leaking from the needle bar and the relevant parts while the machine is running, and even while the machine is stopped at night.
- Thanks to this stable lubrication and high "Oil Barrier" effectiveness, the P model machines protect your important sewn products against oil stains.



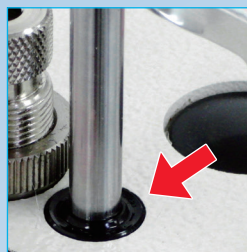
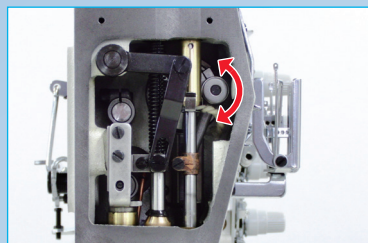
This feature reduces oil stains on sewn products, decreasing the use of stain remover. The W600PC series is a reliable sewing machine that creates a clean work environment and contributes to global environmental protection.

W600PC Series



Features

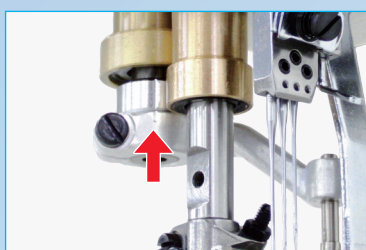
Needle bar stroke can be changed easily, depending on thickness of sewing materials.



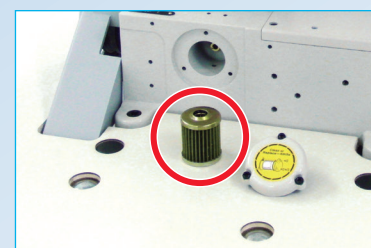
New type of oil-seal in the top of needle bar bushing.



Equipped with the needle thread take-up and safety protection that same as W600P type.



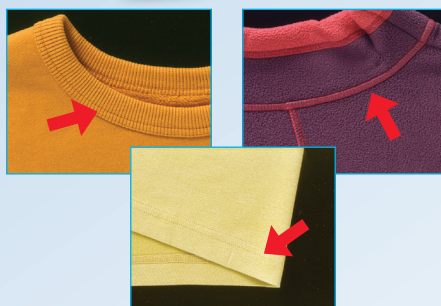
Spreader holder has alignment mark. Reinstalling the spreader is easy.



Oil circulation by oil pump and equipped with oil filter.



Gauge parts are the same like W600P series.



You simply change parts to perform other operations. The machine can perform covering, hemming and binding operations in addition to basic sewing.



Since there is a large space, the operators can handle the fabric smoothly.

● W600PC series Subclasses

						Standard equipments / Accessories	Optional devices	Remarks
Plain seaming (Versatile model)	W662PC-01G	2	3·4	3.2·4.0·4.8	5,500	Hemming guide Covering guide	Thread trimmer: UT Rear puller: RP	-01: Plain seaming -03: Covering (Folding over) -08: Hemming
		3	4·5	5.6·6.4				
Attaching flat nit elastic tubular articles	W662PC-33A	3	4·5	5.6·6.4	5,000	Fabric trimmer: FT Rear puller: RP	Thread trimmer: UT	
Hemming	W662PC-35B	2	3·4	4.0·4.8	5,000	Fabric trimmer: FT	Thread trimmer: UT Rear puller: RP	
		3	4·5	5.6·6.4				

※ 5.6mm and 6.4mm gauges are achieved by removing the middle from the machines with gauges 3-needle machines.

PEGASUS SEWING MACHINE PTE. LTD.

30 Tai Seng Street # 09-04 Breadtalk IHQ Singapore 534013
TEL : 65-6296-3638 FAX : 65-6297-2353

※ The specification and/or appearance for equipment described in this catalog are subject to change because of modification without previous notice.

©2019 PEGASUS SEWING MACHINE MFG. CO., LTD.
Catalog No. 103109 Produced November 2020.